



The Anything Else option for data import

Stat package data

The MDM file can be constructed directly from different types of input files including SPSS, ASCII, SAS, SYSTAT, and STATA, or indirectly from many additional types of data file formats through the third-party software module included in the HLM program.

When importing stat package data, the **Input File Type** field on the **Make MDM** dialog box offers a number of options, as shown below. The first four options are supported by HLM code and allows the import of the most commonly used stat package data files. However, it should be noted that whenever a new version of a stat package is released, the associated option on this list may no longer work. This is usually due to changes in data file headers in the newer stat package versions. When this happens, an error message warning that the

Data file is empty

will appear in the Command Prompt box when making an MDM file is attempted.

Make MDM HLM3

MDM template file

File Name:

Open mdmt file Save mdmt file Edit mdmt file

MDM File Name (use .mdm suffix)

Input File Type: SPSS/Windows

Structure of Data - this affects the notation only!

☒ cross sectional
 ☐ cross-sectional with measurement model
 ☐ longitudinal
 ☐ longitudinal with measurement model at level 2

Level-1 Specification

Browse Level-1 File Name: Choose Variables

Missing Data? Delete missing level-1 data when:

☒ No ☐ Yes
 ☐ making mdm ☐ running analyses

Level-2 Specification

Browse Level-2 File Name: Choose Variables

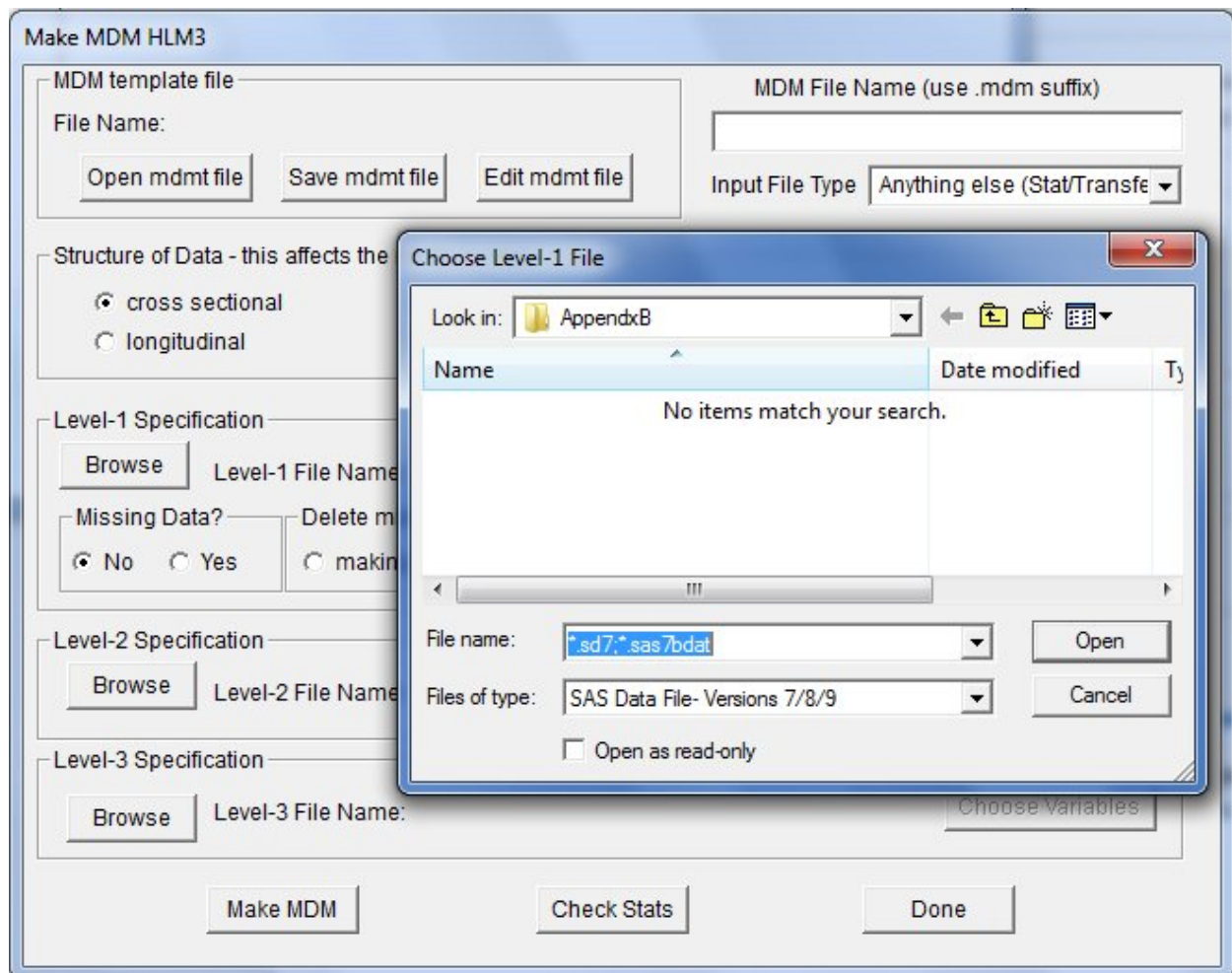
Level-3 Specification

Browse Level-3 File Name: Choose Variables

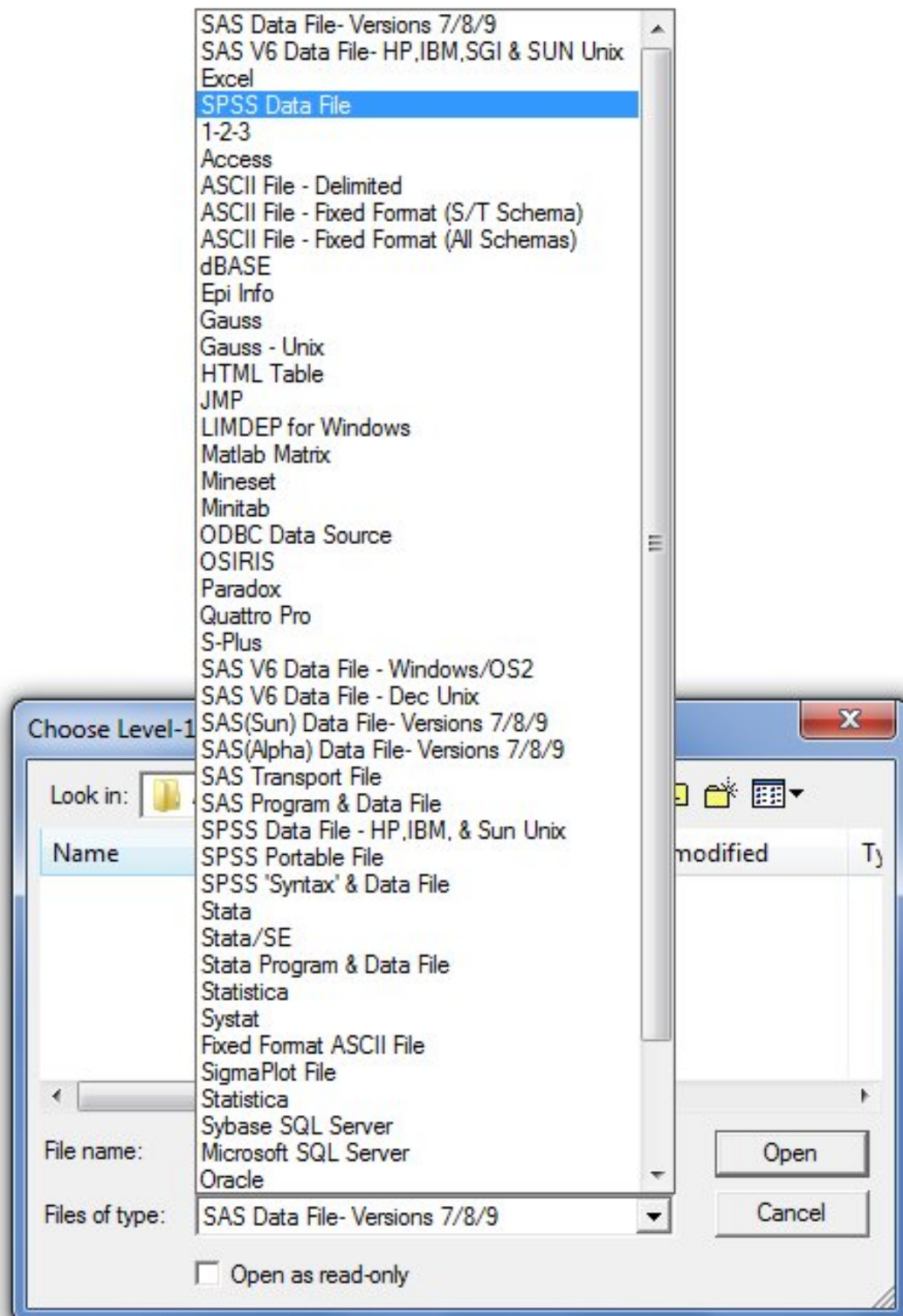
Make MDM Check Stats Done

In that case, the **Anything Else** option should be used. This option is associated with a third-party software module that can be used to ready a large number of other stat package data files. We briefly illustrate the use of this option for reading an SPSS data file.

First, set the **Input File Type** to **Anything Else**. Then click Browse to select a level-1 data file in the **Level-1 Specification** field. The **Open** dialog box that appears has a default setting of SAS Data File – Versions 7/8/9.



Select SPSS Data File from the **Files of Type** field on the **Open** dialog box as shown below.



Now browse for the data file and click **Open** when done. Note that this third-party software module is not available in the free student edition.